

20  
13

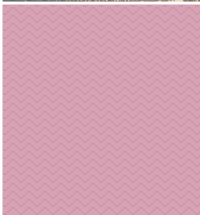
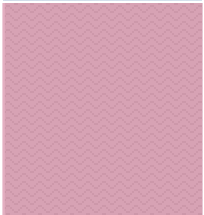
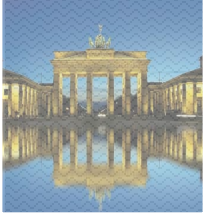
# INFORMATION GUIDE

APARTMENT IN CENTRAL BERLIN  
[www.berlin-apartment.yolasite.com](http://www.berlin-apartment.yolasite.com)

ACCOMMODATING GUESTS SINCE 2008

We are located in the centre of the city close to Tiergarten and many tourist attractions of the West central Berlin. The nearest station Nollendorfplatz has convenient transport links to the East centre of Berlin, the West and the rest of the city.

In this guide you will find all the necessary information for your stay at the apartment. We really hope you enjoy the comfort and the facilities of the apartment. Have a great time in Berlin.



Toby Musk  
Kielganstrasse 5, Berlin  
2008-2013



# APARTMENT INFORMATION

---

## Bedroom 1

- King size bed 200x 180 with 2 mattresses, 2 pillows, 2 single duvets and linen
- 2 bed side tables with lights
- Large 3 section wardrobe
- Desk with office chair
- Tower fan (summer only)

## Bedroom 2

- King size bed 200 x 180 with 2 mattresses, 2 pillows, dbl duvet, linen
- 2 bed side tables with lights
- Large wardrobe with 3 sections and sliding doors, 1 with full size mirror
- Tower fan (summer only)

## Bathroom

- Bath with shower
- Wash basin
- Mirror with shelf and light
- Toilet with side accessories
- Washing machine
- Towel rail (1xBath and 1xHand towel for each guest provided)

## Kitchen/dining/living

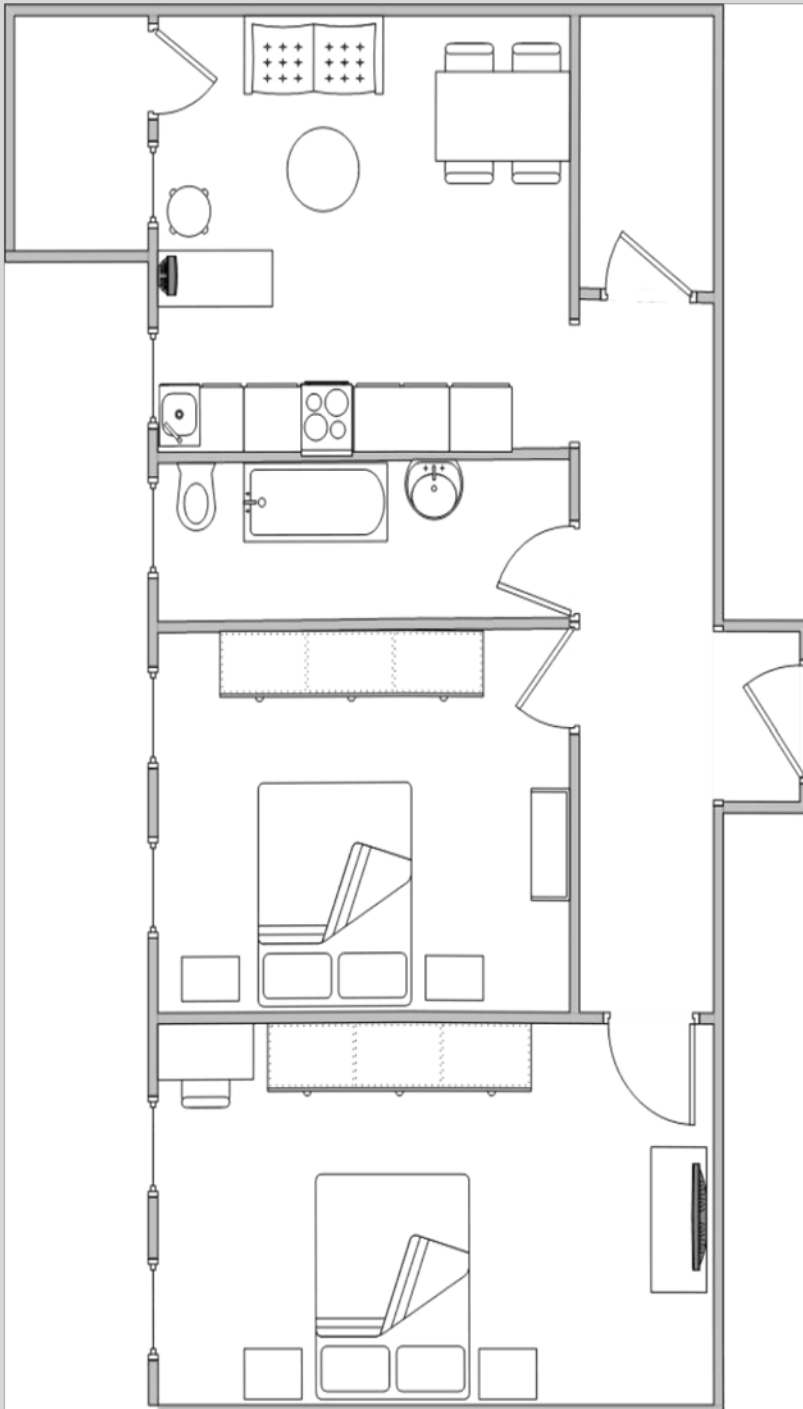
- Kitchen units arranged along the wall with integrated fridge, 4-hob cooker, oven, odour extractor fan with light, sink
- Dining table with 4 chairs
- Saucepans, Cutlery and Crockery sets
- Bar stand/table with 2 bar chairs
- Kettle, toaster and cafeteria
- Sofa, coffee table, floor standing light
- 32" LCD Television
- DVD player
- Iron and Vacuum Cleaner

*[Next Page – Floor Plan](#)*

---



# PLAN/LAYOUT OF THE APARTMENT



The apartment is located on the top floor (roof level) of this 1935 Villa – originally it was a private property, which was later divided into 10 apartments. Due to the date of the construction, there is no lift in the building and therefore, may not be suitable for elderly or disabled persons. It is normally very quiet and clean in the building, so please respect it in the same way.

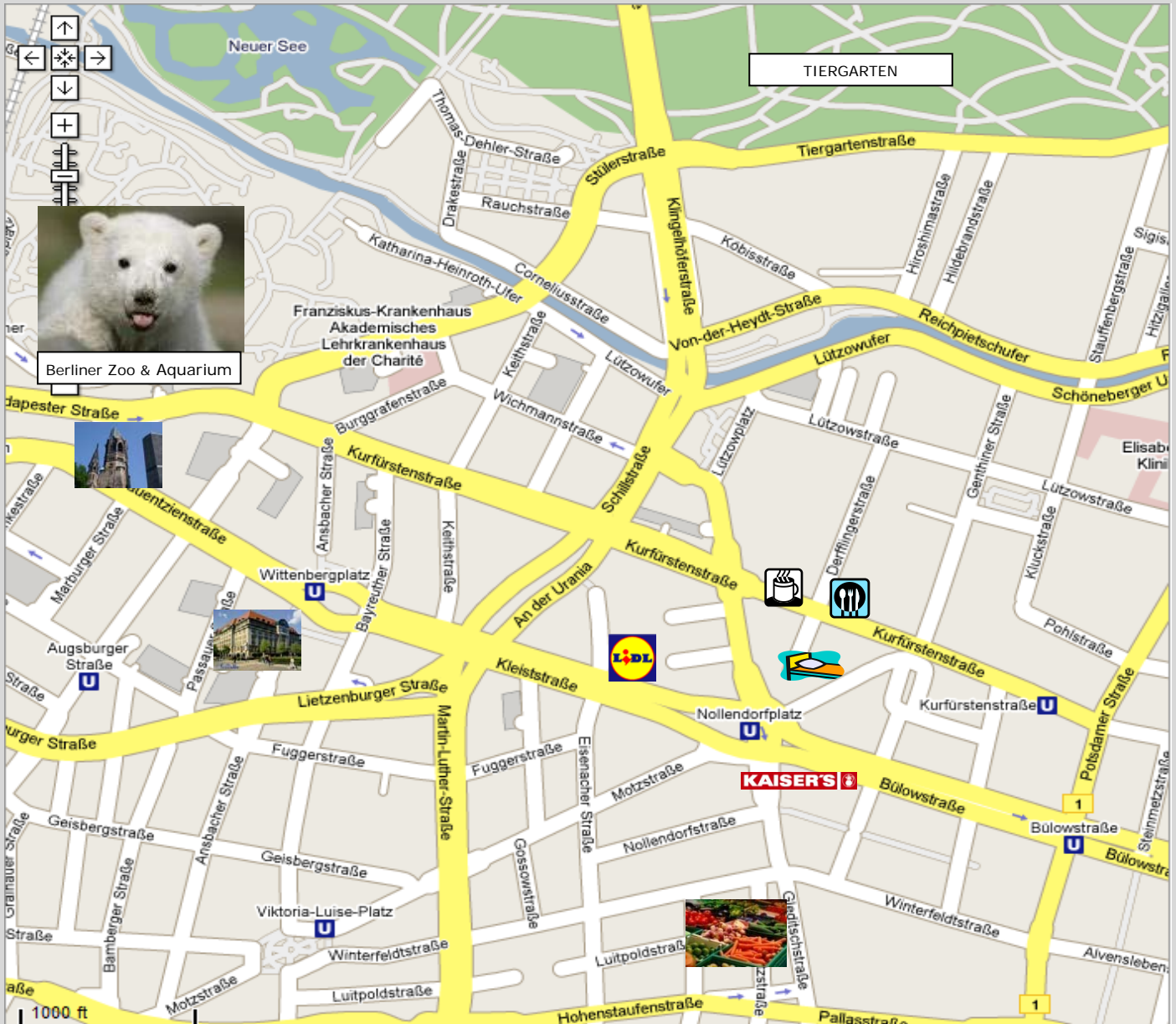


\*Apartment layout and furniture positioning are only for illustration. Actual content of each room may slightly differ.

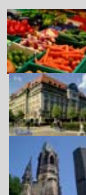
# LOCATION

Apartment is located in Kielganstrasse,5 – just off Kurfürsten Strasse, second building on your Left. It is positioned in the Centre of Berlin, close to the famous Tiergarten Park, The area is in the Western part of old Berlin, but it is also very close to the border where the Berlin Wall divided the East and the West (Potsdamer Platz and Checkpoint Charlie).

There are 2 U-bahn rail stations nearby – Nollendorfplatz and Kurfürsten Strasse.



-  - Apartment location
-  - Cafe Einstein – very good food too
-  - Italian Bar and Restaurant IL VALENTINO
-  - Grocery shops/supermarkets (please note all shops in Germany are closed on Sundays)
- 



- Winterfeldt Platz – Saturday Market – good for delicatessen and fresh food
- KaDeWe – the most famous top brands department store in Berlin
- Kaiser Wilhelm Memorial Church – Berlin's most iconic church with a broken dome

# HOW TO GET TO APARTMENT

## From Schoenefeld Airport

When you arrive at the airport the first thing you need to do is to pick up a free BVG transport map and purchase a ticket to Central Berlin (zone A,B,C) – one way cost €3.10 per adult (multiple changes allowed on any type of public transport as long as the journey is continuous in one direction). There is an information desk at the airport – staff will be able to help you with the latest information.

When at the train

platform you will need to stamp your ticket to validate it (ticket is valid for 2 hrs of travel). The best way to get to the apartment from Schoenefeld Airport is to take the train (there are 3 types: **DB** (national rail), **U-** and **S-Bahn** = Underground and Overground railways

It is quicker and more comfortable to use the national rail - DB provides special Airport Express service – red double-

decker trains RB14 & RE7, depart Airport station at 23 & 49 mins of every hour - take direction to Berlin Hauptbahnhof or Zoologische Garten - you need to get off at **Zoologische Garten** (which used to be the central main station for Western Berlin) and change onto U2 (red line) 2 stops is Nollendorfplatz - get off here – it is about 3/4 min walk to the apartment - please use the map for navigation (if I'm in Berlin I will be able

to meet you at the station if required).



## From Tegel Airport

From Tegel Airport take BUS X9 to Zoologische Garten (aprox. 15min). From there - change onto Underground U2 (red line) to Nollendorfplatz - 2 stops.

Zoologische Garten station can be a complicated station to navigate around but should be well signposted. You can also walk from Zoologische Garten – aprox. 15 min - that is if you don't mind carrying luggage, and enjoy the views on the way.

You can plan your journey at [www.bvg.de](http://www.bvg.de) which is also available in English!

# TRAVEL INFO

**Tickets and Zones** This can be a little confusing. The best Value for you will depend on the number of adults/children in your party, what you want to see in Berlin, how far you want to go and how often you want to use public transport. Below you will find a list of most common travel tickets. If you are travelling with a family - take a look at Berlin Welcome Card (zones ABC) which allows up to 3 children age 14 and under to travel on same ticket as adult. Check [www.bvg.de](http://www.bvg.de) for more information (German and English).

Some Facts:

Berlin is divided into zones A, B and C.  
 Apartment Location – zone A.  
 Most Tourist Attractions are within Zone A, but you can not buy day/week passes just for Zone A.

Tickets available: zones AB (Centre) and ABC (for Potsdam and now Schoenefeld Airport, squeezed out to Zone C – I guess to make more money from travellers)

Prices shown: adult / child  
 Child = 6 to 14 years of age,  
 children up to 6 years of age travel free

### Single Ticket

from/to Schoenefeld airport 3,10€/ 2,20€  
 Single Ticket within zones AB 2,40€/ 1,50€  
 Single Ticket - short distance 1,40€/ 1,10€

**Day Pass AB** 6,50€/ 4,60€  
**Day Pass ABC** 7,00€/ 5,20€

**Group Ticket ABC Day Pass**  
 (upto 5 persons) 16,00€

**7-Days Pass** AB= 28,00€; ABC= 34,50€

## Berlin Welcome Card

It may be worth getting Berlin Welcome Card

### Berlin

(zones AB only; valid for just one person)

- 48 hours only €18.50
- 72 hours only €24.50
- 5 days only €31.50

### Berlin and Potsdam

(fare zones Berlin ABC;

Ideal for families - valid for one adult and up to 3 children (up to 14 years of age)

- 48 hours only €20.50
- 72 hours only €26.50
- 5 days only €36.50

More choice and info @ [www.bvg.de](http://www.bvg.de) tickets & fares



This ticket comes with a convenient Guide with integrated city map, which will give you all the latest insider tips so you can get the most out of discovering the city – up to 50% or free entry to more than 150 top sights and cultural highlights, e.g. city tours, guided tours, bike tours and boat tours, museums, top attractions, shows and theatres, restaurants, eateries, clubs / discos / dance venues, offers on sport, beauty and spa, plus souvenirs.

Detailed information on Berlin Welcome Card, Berlin Transport map and Tourist map are available to download from my website at [www.centralberlin.hotels.officelive.com](http://www.centralberlin.hotels.officelive.com) – select Location from the menu.

**Taxi** – you can check prices and pre-book your taxi/shuttle from/to Airports at: [www.german-transfer.de](http://www.german-transfer.de) (enter destination post-code 10783)

# ATTRACTIONS



Some of the important Tourist attractions are within walking distance from the apartment. These include **Keiser-Wilhelm Church**(8), KaDeWe and **Ku'damm** – the shopping centre of the West, The **Zoo** and Aquarium, the **Tiergarten** park with its numerous walkways and lakes ideal for relaxation and sunbathing in the summer etc, and Potsdamer Platz to the East.

Once you are in **Tiergarten** you can walk to the iconic **Grosser Stern column**(4) and down the historic **Street of 17 June** - pass the **Reichstag/ Parliament building**(21) and the **monument to the Soviet Army**(10) - towards the **Brandenburg Gate**(1) and the Pariser Platz

The river/canal **Spree** and the all new Main Rail Station (**Hauptbahnhof**) is worth a look. Plenty of interesting and modern architecture and design here.

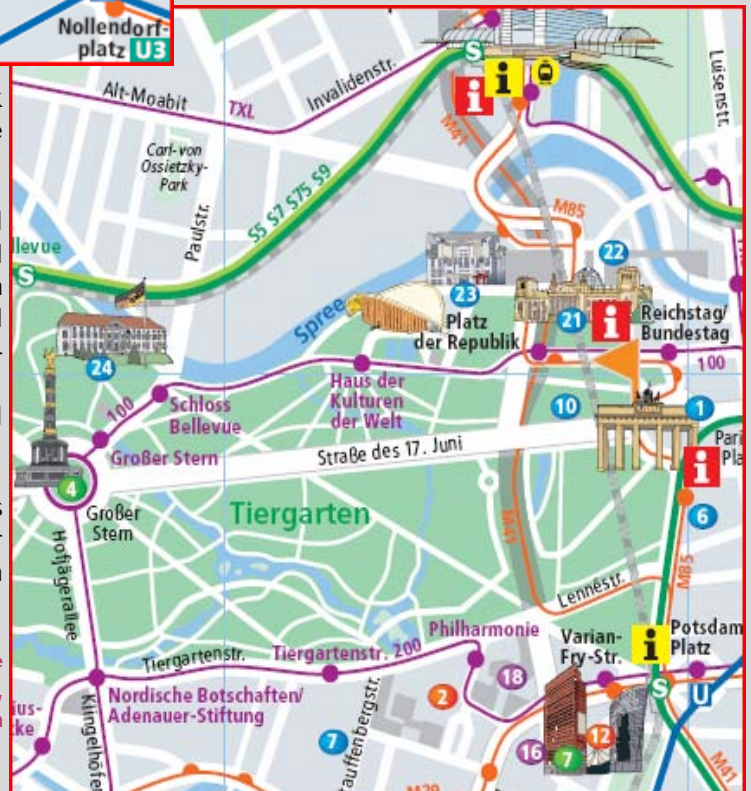
Checkout the **Holocaust Memorial** (6)

From Brandenburg Gate you can walk down the **Unter den Linden**(1) to the **Museum Island**.

If you like art there is always the **National Gallery**(18) near **Potsdamer Platz**, and the **Sony Centre**(12) square with restaurants bars, cinema, museums and shops for all your entertainment needs – best visited in the evening for illumination, free wireless internet available for all visitors.

Not far from here in **Friedrich Strasse** is the historic **Checkpoint Charlie** – border control between the East and the West in old Berlin.

I have left a full Berlin Guide book in the apartment. Feel free to use it during your stay, but please take a good care of it and leave it in the apartment at the end of your stay. Enjoy!



## OTHER INFORMATION

---

### Internet

Wireless internet access available 24/7, unlimited usage. Please bring your own computer (laptop/notebook) or wi-fi enabled phone - Wireless Access details will be advised upon arrival if required.

### TV/Cable

There are over 40 channels available on German cable TV, including some international broadcasters. English news channels BBC and CNN are available on channels 19 and 35.

### Final Cleaning Fee

This covers a basic cleaning after your stay – change/wash of linen and towels, dry and wet wash throughout the apartment, dusting, basic tidying and removal of waste. Dishes and cutlery must be washed and dried by guests before departing. Excessive mess in the apartment will result in deductions from the security/damage deposit to cover extra time spent on cleaning by the cleaning person.

### Radiators/Heating

Each radiator is controlled individually by thermostatic valve. On arrival you may find radiators turned off. If required turn on full power (mark 5) – as rooms warm up you may need to reduce the heating to mark 2 or 3 – this is enough to keep the temperature constant.

### Keys

Keys pick-up and drop-off point – you will be notified 1 week before your arrival.

### Check-In and Check-Out

Standard times for Check-in: after 15.00, Check-Out: before 11.00. Earlier arrival or later departure times should be agreed in advance – these are possible depending on other bookings. Late arrivals after 23.00 only by prior arrangement.

### Security/Damage deposit

You will be asked to pay 200 EUR security/damage deposit in advance. This will be refunded in full after your stay, provided no damage caused.

### No Smoking

Smoking is NOT permitted in any parts of the apartment or building. If odours from smoking are detected in the apartment, part of security/damage deposit will be used to carry out specialised cleaning.

### Contact

For any assistance you can contact me via email [tobymusk@gmail.com](mailto:tobymusk@gmail.com) - this is monitored everyday on a regular basis. Alternatively you may contact me on my mobile.

## YOUR NOTES/PLANS HERE

---

**Eating Out** – a choice of international restaurants, cafes and bars can be found nearby Nollendorfplatz (along Maassen Strasse towards Winterfeldplatz) & Wietenbergplatz stations. Historic CAFE EINSTEIN coffee house and restaurant is just around the corner in Kurfursten Strasse, where you will also find a very good quality Italian restaurant IL VALENTINO at the crossroad with Lielgan Strasse. German Specialities can be enjoyed at AMBROSIUS – on the corner of Kurfursten Strasse and Einem Strasse.